

SAFETY INSTRUCTIONS

- Regularly check nuts and bolts attaching the Rooftop Tent to your vehicle to make sure fastenings are tight and in good condition.
- Remove the Rooftop Tent before using a commercial car wash.
- Do not use Rooftop Tent or storage bag to hoist, lift or support yourself.
- It is important when mounting to a vehicle, that all the mounting brackets supplied are adequately spaced to support the weight of the Rooftop Tent.
- Products applied to a vehicle roof will alter vehicle handling. The manufacturer disclaims all responsibility in relation to accidents due to improper use, incorrect maintenance, or negligence in maintaining fastening hardware. It is recommended to not exceed 100km/h.
- This Rooftop Tent will increase the height of your vehicle. Measure the overall height and be aware of height restrictions in car park buildings etc.
- If pitching in windy conditions it is advised to find a less exposed location. Park with the back of the tent facing into the wind. Be aware of dropping branches and other potential hazards. Collapse the tent in strong winds.
- Never drive with roof tent erected.
- Do not put anything on the top of the tent when it is installed.
- The load-bearing of the frame is no more than 300kg.

PARTS INCLUDED

YOUR TUATARA SUMMIT EXTENDED ROOFTOP TENT INCLUDES:

1 x Rooftop Tent

2 x mounting rails

1 x ladder (includes 2 x ladder brackets, 2 x bolts, 2 x nuts, 4 x washers)

2 x storage bags

1 x travel cover

4 x mounting brackets

4 x spacers

8 x slide plates

8 x M8 x 60 bolt sets (hexagon head bolt, nut and washer)

8 x M8 x 40 bolt sets (hexagon head bolt, nut and washer)

8 x M8 self-locking nuts

8 x M8 washers

1 x porch pole

2 x fibreglass window poles

2 x fibreglass window tensioners

4 x plastic end caps

4 x internal bungee cords

2 x spring poles

3 x pegs

3 x guy ropes

1 x 13mm ratchet spanner

2 x 10mm spanners

You will also need:

1 x person to help attach the Rooftop Tent to the vehicle

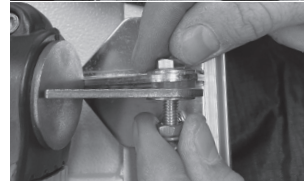
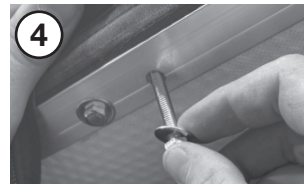
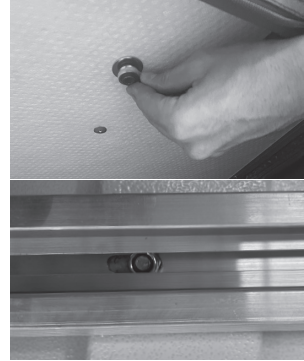
ROOFTOP TENT INSTALLATION

The Tuatara Summit Extended can be fitted to smaller vehicles as long as the fitted roof rack or crossbars support a dynamic weight load of 75kg or higher. We recommend using only permanent roof racks and crossbars. The distance between the car roof and the bottom of the roof rack should be no less than 3cm. The roof rack or crossbars must be between 80-100cm distance apart.

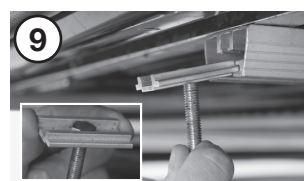
1. Decide on the orientation of your Rooftop Tent. The Tuatara Summit Extended can open to the rear or side of your vehicle. Side mounting is better for smaller vehicles and doesn't interfere with the boot opening.
2. If rear mounting is required, first determine the length the mounting rails need to be. To adjust the length of the mounting rails; line them up to the pre-drilled holes on the base of the Rooftop Tent. Mark where the rails need to be cut. Ensure protective clothing is worn when using power tools to cut metal. Cut the rails to the required length. File off all sharp edges.

Note: If the mounting rail is cut shorter, it will not provide the same strength if reattached back to the original position.

3. To fix the mounting rails; position the rails over the pre-drilled holes. Feed the nuts into the mounting rail. Slightly open the Rooftop Tent and move the mattress so you can insert the washers and bolts through the pre-drilled holes and nuts. Tighten the bolts from inside the Rooftop Tent. Do not overtighten.
4. Attach the ladder brackets to the pre-drilled holes in the metal tent frame. Secure the ladder using the bolts and nuts provided. Do not overtighten.
5. Attach the storage bags by sliding into the track on each side of the ladder.

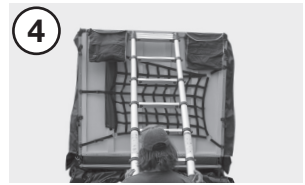


6. Attach the travel cover by feeding the zipper through the track on the base (mounting rail) of the tent. Ensure the zipper cover is put through the mattress/hinge side of the tent.
7. Close the Rooftop Tent and secure it with the compression straps.
8. Position the tent onto your vehicle. Ensure the roof racks are evenly spread under the Rooftop Tent. Carefully lift the Rooftop Tent onto the roof rack. This will require two people.
9. Insert the supplied bolts through the holes on the grooved side of the eight slide plates.
10. To help fit the mounting brackets onto smaller roof racks, they are supplied with spacers. Use these to make your Rooftop Tent more secure.
11. Attach the Rooftop Tent at the four points where the roof rack and the frame meet. Slide two slide plates and bolts into both ends of each mounting rail. Position so one bolt is on either side of each roof rack. Loosely hand tighten.
12. Check the alignment and balance of the Rooftop Tent before fully tightening all bolts. Ensure all eight points are tightened evenly using the M8 self-locking bolts.
13. Place the end caps over each end of the frame to prevent wind noise.

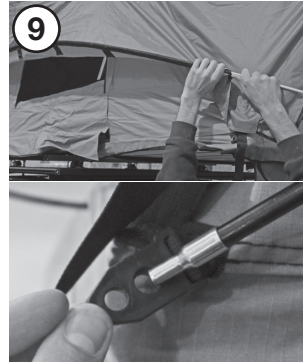


PITCHING INSTRUCTIONS

1. Before opening your Tuatara Summit Extended Rooftop Tent, ensure that all eight bolts are fastened tight so that the tent does not move when opening.
2. Release the straps and unzip the Travel Cover. Remove towards the opening section. Secure the Travel Cover underneath the fold-out section of the Rooftop tent using the attached fastener.
3. Unclip the ladder's travel strap and fully extend the ladder until the telescopic rungs on both sides click into place.
4. Once the ladder is fully extended, use the ladder as leverage to fold out the extension section on the Rooftop Tent.
5. Once unfolded, adjust the height of your ladder starting at the top by pushing both buttons at the same time. Shorten the ladder rungs to the desired length so that it is at a 75° angle and the extension is sitting level with your vehicle. Adjust the ladder to ensure it is firm and that it does not bounce or move.
6. To extend the entrance area, pull out the porch extension pole from the Rooftop Tent. The pre-shaped corners fit into the front porch corners.
7. Attach the other end of the porch extension pole into the pole slots on the outer edges of the frame, this stretches out the front porch.



8. Pitch out the porch with the attached guy ropes. Ensure the pegs are at a 45° angle so they remain secure. Adjust the tritensioners so the ropes remain taut.
9. To pitch the side windows, assemble the fibreglass poles. Feed the longer poles through the window power mesh sleeves and secure each end by placing the pole into the pole connector.
10. Tension out the side windows by inserting each end of the shorter fibreglass poles into the corresponding pockets on the middle of the fly and window extension.
11. Once inside the Rooftop Tent, undo the internal bungees that help to pull in the body when packing down.
12. Partly open the windows to allow for airflow, this will help to reduce condensation build-up. If not pitching the side windows completely, they can be rolled up for faster pitching. Ensure all rain flaps at the main hinge joint are pulled down to prevent water from penetrating the frame.
13. Attach the annex if required (sold separately).



PACKING INSTRUCTIONS

1. Ensure the Rooftop Tent is dry and clean inside and out before packing down so that mildew or mould does not build up.
2. Make sure nothing heavy or bulky is left inside the Rooftop Tent before folding. Any bedding should be laid flat.
3. Partly unzip the windows and doors so that the air can escape from the tent when folded. Reattach the internal bungees that will pull in the body when packing down.
4. Remove the side window fibreglass poles and the two front spring poles and place them back into the bag. Place the poles under the mattress of the tent.
5. Remove the porch pole. Store on top of the tent or fit around tent after folded.
6. Use the extended ladder as leverage to fold the Rooftop Tent in half. To compress the ladder, press and hold both buttons on the bottom rung to collapse it up. Secure with the strap.
7. Compress the tent by pushing down from the top before securing compression straps.
8. Pull the Travel Cover over the Rooftop Tent. Ensure all the fabric is tucked inside the Travel Cover. Secure the corners with the buckles. Check all fabric is clear of the zip before zipping up the cover.
9. Finally, compress the Rooftop Tent further with the two compression straps.



CARE INSTRUCTIONS

PLEASE READ ALL OF THE CARE INFORMATION AND INSTRUCTIONS INCLUDED WITH THIS ROOFTOP TENT BEFORE USING IT FOR THE FIRST TIME. THE BODY OF THE TUATARA SUMMIT EXTENDED IS RIPSTOP POLYESTER CANVAS AND THE FLY IS RIPSTOP POLYESTER.

1. Never store your Rooftop Tent away damp. Should mildew spots appear, brush them off before they become attached. Mildew damage of any kind is not covered by our warranty. DO NOT use excessive force or other harsh tools to remove soilage from your Rooftop Tent.
2. Like all assets, polyester fabric requires regular care and attention to give the life and service expected. Regular cleaning with an abundance of clean water and a soft brush, especially after exposure to saltwater will preserve your Rooftop Tents life. Do not allow bird droppings, earth or vegetable matter to remain in contact with the fabric. NEVER USE SOAPS OR DETERGENTS.
3. Polyester fabric is not fireproof, if exposed to flame or high heat sources it can ignite and burn. Always take care when using spirit or gas appliances such as stoves and lanterns near your Rooftop Tent.
4. Some products contain chemicals, which can destroy your Rooftop Tent proofing and cause it to leak. Avoid using aerosol sprays and keep petrol, oil, solvents and other similar fluids away from the fabric. Do not use these inside or around your Rooftop Tent as any damage caused by these is not covered by our warranty.
5. Always remember that your Rooftop Tent is made from cloth, and should not be compared with a house. It is waterproof under normal conditions but in severe weather conditions, some water may penetrate. If you apply waterproofing to your Rooftop Tent, check that you are applying the right one for the polyester fabric type.
6. Polyester fabric is not 100% colourfast and some fading will occur naturally, however; this does not affect the performance of the fabric. Do not leave your Rooftop Tent up and unattended for extended periods of time. Rooftop Tents are not designed as permanent dwellings. Rooftop Tents are guaranteed for normal camping use only.
7. Check all fixtures regularly and tighten them when necessary.
8. Always wash tent and frame if the Rooftop Tent is exposed to coastal or salty conditions.
9. Remove the mattress before storing for long periods. Air the tent and mattress regularly to prevent dampness in bedding.

IMPORTANT INFORMATION

1. Ensure the Rooftop Tent is clean and dry before it is packed away.
2. Store in a clean, dry space when the Rooftop tent is not attached to your vehicle.
3. Do not clean with harsh chemicals, only use water and a soft cloth.
4. The Travel Cover should always be used when driving.
5. Before using the ladder, ensure that all parts are locked. Check regularly to ensure all parts are in good condition and in working order.
6. Do not use the ladder if only supported by one leg. If on ice or unstable ground, use an anti-skid device under the ladder.
7. When climbing the ladder, face the ladder while climbing and hold firmly. Step in the centre of the rungs. Do not jump off the ladder.
8. Do not adjust the ladder while on the ladder.
9. Before contracting the ladder, ensure it is clean from dirt, dust and grease.
10. The frame and ladder are metal and will conduct electricity, keep away from live electrical currents.
11. The ladder should be at an angle of 75° to the ground when in use.
12. When extending the ladder. Start at the top, extend slowly in sequence, locking each rung carefully before moving to the next. Grip from the bottom.
13. When contracting the ladder. Start at the bottom, click the buttons on the underside of the rungs and collapse slowly in sequence, working to the top of the ladder. Fasten the travel strap.
14. If the extended ladder isn't sitting flat, reduce the entire ladder first, then extend again to the correct height, starting from the top.
15. Do not use the tent and ladder in extremely high winds.
16. The ladder is designed for one person only, maximum load 150kg.
17. Do not jump inside Rooftop Tent.
18. Do not leave children unattended in or around this Rooftop Tent.

WARRANTY INFORMATION

The warranty period for this awning is found on the packaging and full details are on the Kiwi Camping website - www.kiwicamping.co.nz.

The original purchaser of this product is offered a warranty if during this time period the product fails due to a fault in either materials or workmanship. Service under this warranty is available by returning the product, with your proof of purchase, to where it was purchased. If after inspection it is determined that the product is defective, we will repair or replace it (at our discretion) free of charge. This warranty does not cover misuse, damage caused by accident, storm or wind damage, mildew, neglect, UV degradation and fair wear and tear. Please note, the warranty on this Rooftop Tent will be deemed void if the product is used for any purpose other than a temporary shelter. If the claim is not deemed a warranty or is outside its warranty period, we can repair the product at a nominal cost.



Distributed by: Aber Living, Hamilton, NZ
www.kiwicamping.co.nz

5523-08/23